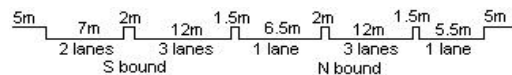


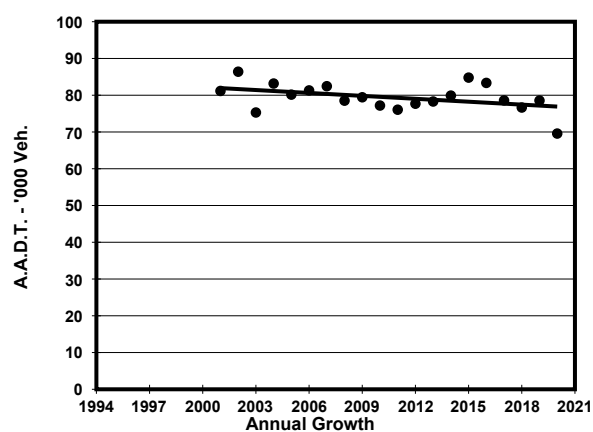
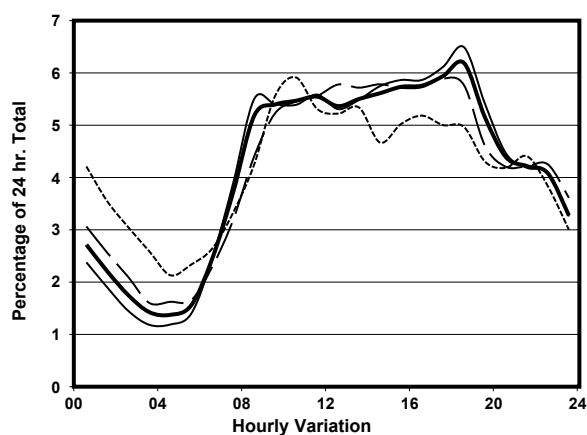
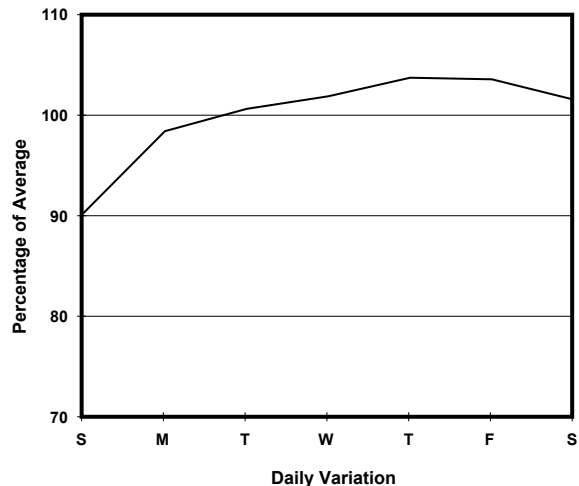
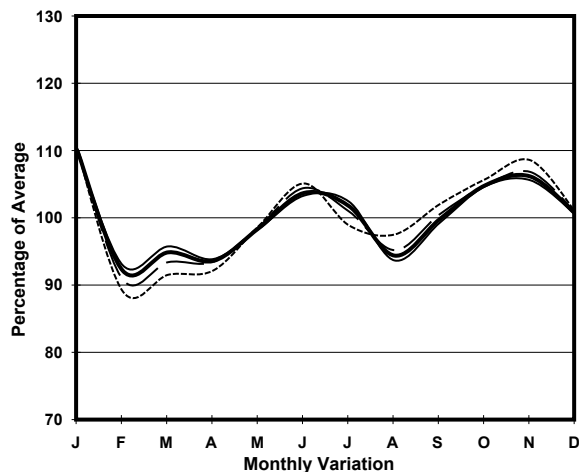
YEAR 2020

LINK FERRY ST & FERRY ST <FO> (from WATERLOO RD to SHANTUNG ST)

COVERAGE (B) STATION 4214
ROAD NETWORK MAJOR
ROAD TYPE PRIMARY DISTRIBUTOR



1. TRAFFIC FLOW VARIATION AND GROWTH



— All day — Mon. - Fri. Sat. - - - - - Sun.

2. TRAFFIC CHARACTERISTICS (BY DIRECTION)

| Parameter | All - Day | Mon. - Fri. | Sat. | Sun. |
|--------------------------------------|-----------|-------------|-----------|-----------|
| SOUTH BOUND | | | | |
| A.A.D.T. | 37530 | 37610 | 37700 | 38280 |
| R 12 / 24 - % | 64.5 | 65.7 | 63.4 | 59.8 |
| R 16 / 24 - % | 81.1 | 82.9 | 79.8 | 73.4 |
| AM Peak Hour | 0800-0900 | 0800-0900 | 0900-1000 | 0900-1000 |
| One-way flow at AM peak hour | 2140 | 2250 | 1920 | 2700 |
| T - % (AM) | - | 6.3 | - | - |
| PM Peak Hour | 1800-1900 | 1800-1900 | 1700-1800 | 1800-1900 |
| One-way flow at PM peak hour | 2090 | 2190 | 2160 | 1640 |
| T - % (PM) | - | 2.5 | - | - |
| Prop.of commercial vehicles - 16 hr. | - | 3.8 | - | - |
| NORTH BOUND | | | | |
| A.A.D.T. | 32040 | 33460 | 33180 | 24970 |
| R 12 / 24 - % | 66.4 | 67.7 | 65.1 | 59.7 |
| R 16 / 24 - % | 85.8 | 86.9 | 83.5 | 81.2 |
| AM Peak Hour | 0900-1000 | 0900-1000 | 0900-1000 | 0900-1000 |
| One-way flow at AM peak hour | 1620 | 1760 | 1790 | 820 |
| T - % (AM) | - | 8 | - | - |
| PM Peak Hour | 1800-1900 | 1800-1900 | 1600-1700 | 1600-1700 |
| One-way flow at PM peak hour | 2210 | 2420 | 2190 | 1680 |
| T - % (PM) | - | 1.8 | - | - |
| Prop.of commercial vehicles - 16 hr. | - | 4 | - | - |

3. OTHER INFORMATION AND COMMENT

4. Vehicle classification and occupancy - Monday to Friday

| Time | | Class of vehicle | | | | | | | | | |
|------------------------|-----|------------------|----------------|------|---------------|------|------------|-------|----------------|---------|-----|
| | | Motor Cycle | Private Car | Taxi | Private LB | PLB | Goods veh. | | Non Fr. Bus | Fr. Bus | |
| | | | | | | | Light | M & H | | SD | DD |
| 0700-0800 | Pro | 11.8 | 37.1 | 14.5 | 0.3 | 3.3 | 26.2 | 4.7 | 0.9 | 0.0 | 1.2 |
| | Ocp | 1.0 | 1.2 | 1.7 | 3.0 | 9.3 | 1.4 | 1.4 | 5.3 | 0.0 | 6.2 |
| 0800-0900 | Pro | 9.8 | 39.1 | 14.3 | 0.5 | 3.6 | 27.0 | 3.9 | 0.6 | 0.0 | 1.1 |
| | Ocp | 1.0 | 1.3 | 1.9 | 2.4 | 8.5 | 1.4 | 1.5 | 9.0 | 0.0 | 8.4 |
| 0900-1000 | Pro | 5.7 | 36.8 | 14.7 | 0.9 | 2.1 | 34.8 | 2.9 | 0.4 | 0.1 | 1.6 |
| | Ocp | 1.0 | 1.3 | 1.8 | 1.9 | 5.5 | 1.4 | 1.2 | 1.0 | 1.0 | 1.0 |
| 1000-1100 | Pro | 4.7 | 37.5 | 15.5 | 0.2 | 1.6 | 35.6 | 3.6 | 0.4 | 0.0 | 0.9 |
| | Ocp | 1.1 | 1.4 | 1.8 | 5.0 | 5.5 | 1.5 | 1.3 | 1.3 | 0.0 | 1.0 |
| 1100-1200 | Pro | 5.1 | 35.3 | 12.9 | 0.7 | 1.6 | 39.4 | 4.2 | 0.2 | 0.0 | 0.6 |
| | Ocp | 1.0 | 1.3 | 1.9 | 1.5 | 4.7 | 1.4 | 1.4 | 5.5 | 0.0 | 1.0 |
| 1200-1300 | Pro | 5.8 | 39.6 | 14.2 | 0.3 | 1.5 | 34.0 | 3.7 | 0.3 | 0.0 | 0.5 |
| | Ocp | 1.1 | 1.4 | 1.8 | 1.3 | 4.6 | 1.4 | 1.5 | 2.3 | 0.0 | 1.1 |
| 1300-1400 | Pro | 5.5 | 40.4 | 15.0 | 0.7 | 1.6 | 33.1 | 2.6 | 0.7 | 0.0 | 0.4 |
| | Ocp | 1.1 | 1.4 | 1.9 | 2.3 | 6.4 | 1.4 | 1.6 | 1.0 | 0.0 | 1.0 |
| 1400-1500 | Pro | 5.4 | 38.8 | 13.4 | 0.7 | 0.8 | 37.1 | 3.2 | 0.3 | 0.0 | 0.3 |
| | Ocp | 1.1 | 1.4 | 1.8 | 2.9 | 5.9 | 1.4 | 1.3 | 2.3 | 0.0 | 1.0 |
| 1500-1600 | Pro | 6.0 | 40.8 | 15.7 | 0.7 | 1.4 | 32.0 | 2.5 | 0.2 | 0.1 | 0.6 |
| | Ocp | 1.1 | 1.4 | 1.7 | 2.4 | 6.1 | 1.3 | 1.2 | 1.0 | 1.0 | 1.0 |
| 1600-1700 | Pro | 7.3 | 42.8 | 14.7 | 0.7 | 2.0 | 29.0 | 2.2 | 0.4 | 0.0 | 0.9 |
| | Ocp | 1.0 | 1.4 | 1.8 | 1.3 | 7.2 | 1.4 | 1.3 | 2.8 | 0.0 | 1.0 |
| 1700-1800 | Pro | 8.2 | 48.4 | 16.0 | 0.3 | 1.5 | 22.2 | 1.7 | 0.6 | 0.0 | 1.1 |
| | Ocp | 1.1 | 1.3 | 1.7 | 3.3 | 9.2 | 1.5 | 1.1 | 1.1 | 0.0 | 1.0 |
| 1800-1900 Peak hour | Pro | 10.0 | 54.4 | 15.4 | 0.1 | 2.1 | 15.8 | 0.8 | 0.8 | 0.0 | 0.5 |
| | Ocp | 1.1 | 1.3 | 2.0 | 2.0 | 12.7 | 1.5 | 1.6 | 14.3 | 0.0 | 1.0 |
| 1900-2000 | Pro | 6.2 | 60.2 | 15.8 | 0.1 | 2.3 | 13.8 | 1.0 | 0.0 | 0.0 | 0.6 |
| | Ocp | 1.1 | 1.4 | 2.0 | 1.0 | 9.8 | 1.4 | 1.5 | 0.0 | 0.0 | 1.0 |
| 2000-2100 | Pro | 4.6 | 54.4 | 22.5 | 0.3 | 3.7 | 11.1 | 1.5 | 0.9 | 0.0 | 1.1 |
| | Ocp | 1.1 | 1.4 | 1.4 | 6.5 | 7.6 | 1.3 | 1.3 | 1.0 | 0.0 | 1.0 |
| 2100-2200 | Pro | 4.8 | 50.6 | 28.6 | 0.0 | 2.8 | 9.5 | 1.8 | 0.6 | 0.0 | 1.3 |
| | Ocp | 1.1 | 1.3 | 1.9 | 0.0 | 6.8 | 1.4 | 1.3 | 4.0 | 0.0 | 1.0 |
| 2200-2300 | Pro | 5.3 | 46.9 | 33.5 | 0.2 | 2.9 | 8.5 | 1.4 | 0.2 | 0.0 | 1.2 |
| | Ocp | 1.1 | 1.4 | 1.7 | 1.0 | 6.5 | 1.5 | 1.8 | 1.0 | 0.0 | 1.0 |
| 16 hours | Pro | 6.7 | 44.0 | 16.7 | 0.4 | 2.1 | 26.2 | 2.6 | 0.5 | 0.1 | 0.8 |
| | Ocp | 1.1 | 1.4 | 1.8 | 2.3 | 7.6 | 1.4 | 1.4 | 4.4 | 1.0 | 2.0 |

Legend: Pro. Proportion of vehicles in % (Sum may not add up to 100% due to figure rounding)*

Ocp. Average occupancy of vehicles including both driver and passengers*

M&H Medium and Heavy

* All traffic data are collected from combined bounds